

FOR SALE

1122 CASTLEFIELD AVENUE

TORONTO, ON | M6B 1E9



NOTABLE ATTRIBUTES

LOCATION

- Castlefield Avenue & Dufferin Street

ZONING

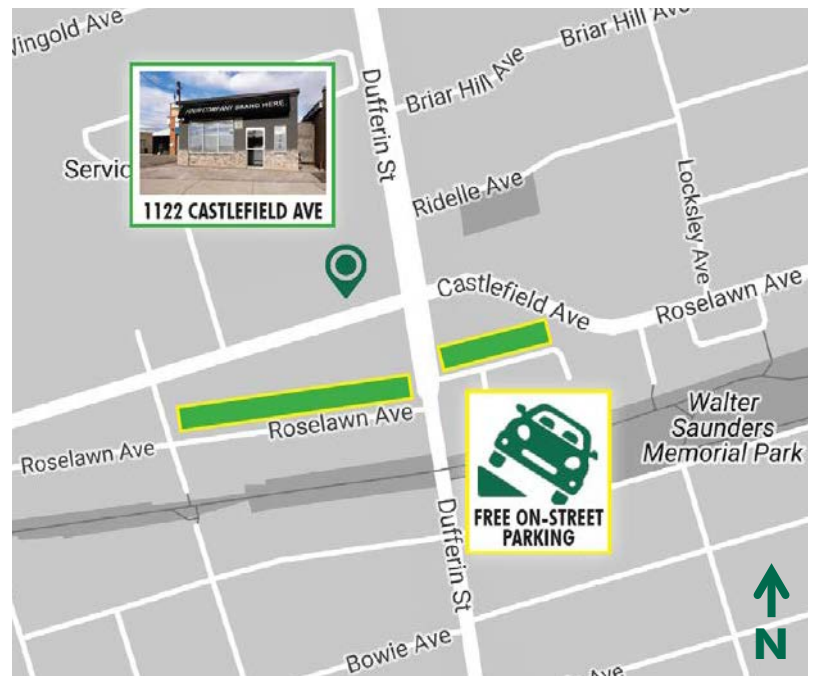
- Prestige Employment – PE(16)

EXCEPTIONAL FEATURES

- Excellent “Designer District” Location
- Single storey commercial office space
- Available for Lease



CONTACT

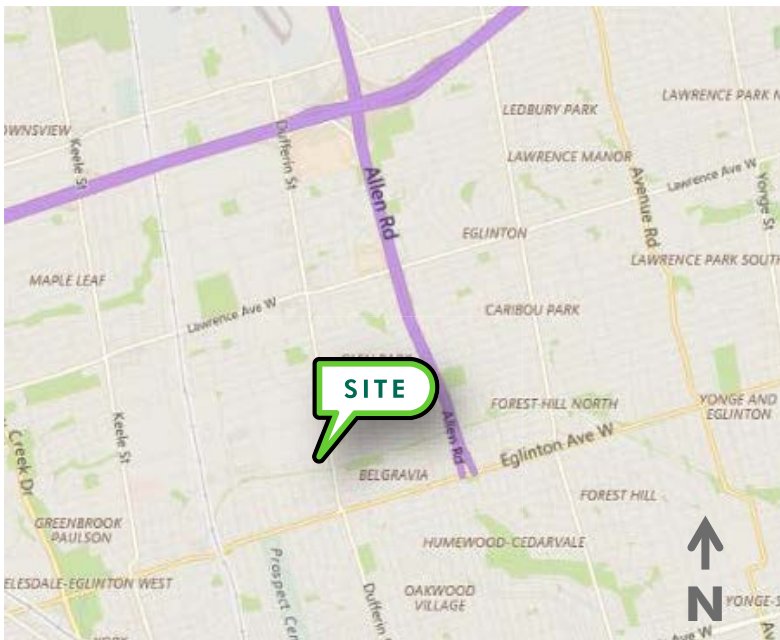


FOR SALE

1122
CASTLEFIELD AVENUE
TORONTO, ON

PROPERTY DETAILS

TOTAL SPACE	2,200 sq. ft.
CLEAR HEIGHT	9 ft.
AIR CONDITIONING	Yes
LOT SIZE	25 x 108.62 ft.
ZONING	Prestige Employment – PE(16)
ASKING PRICE	\$875,000
TAXES	\$8,398 (2017)
AVAILABLE	December 1, 2017



SITE PLANS

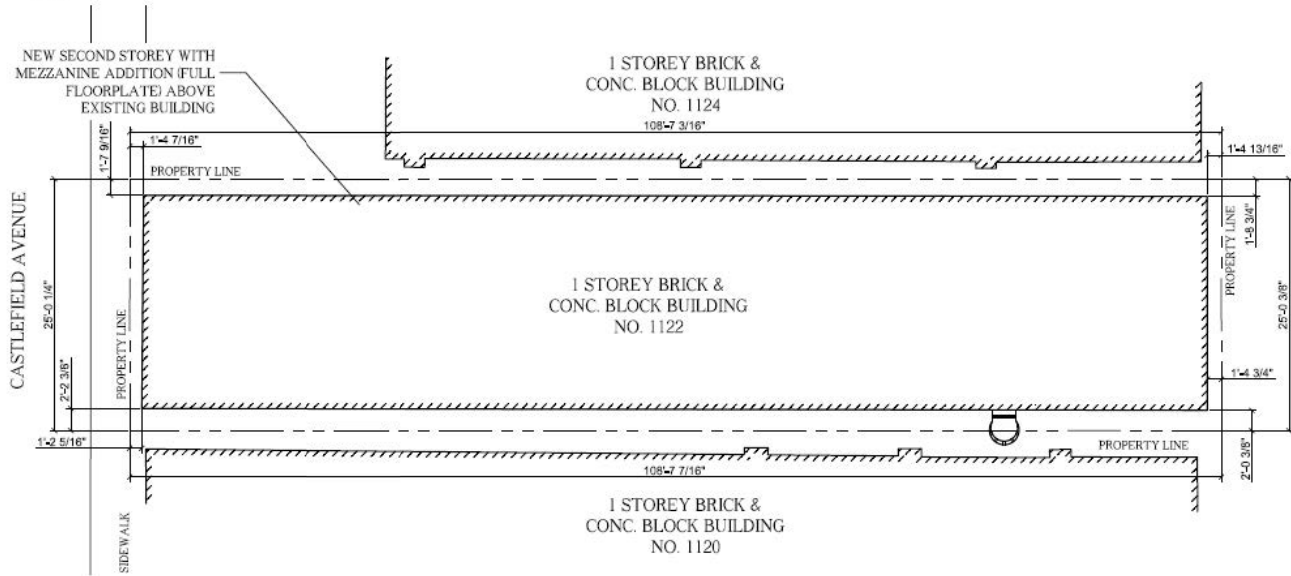
1122
CASTLEFIELD AVENUE
TORONTO, ON



SITE STATISTICS

	EXISTING	PROPOSED
- NUMBER OF STOREYS	1	3
- AGGREGATE GROSS FLOOR AREA (ABOVE GRADE STRUCTURES)	211m ² (2272sqft)	513m ² (5522sqft)
- FLOOR SPACE INDEX (FSI)	0.83	2

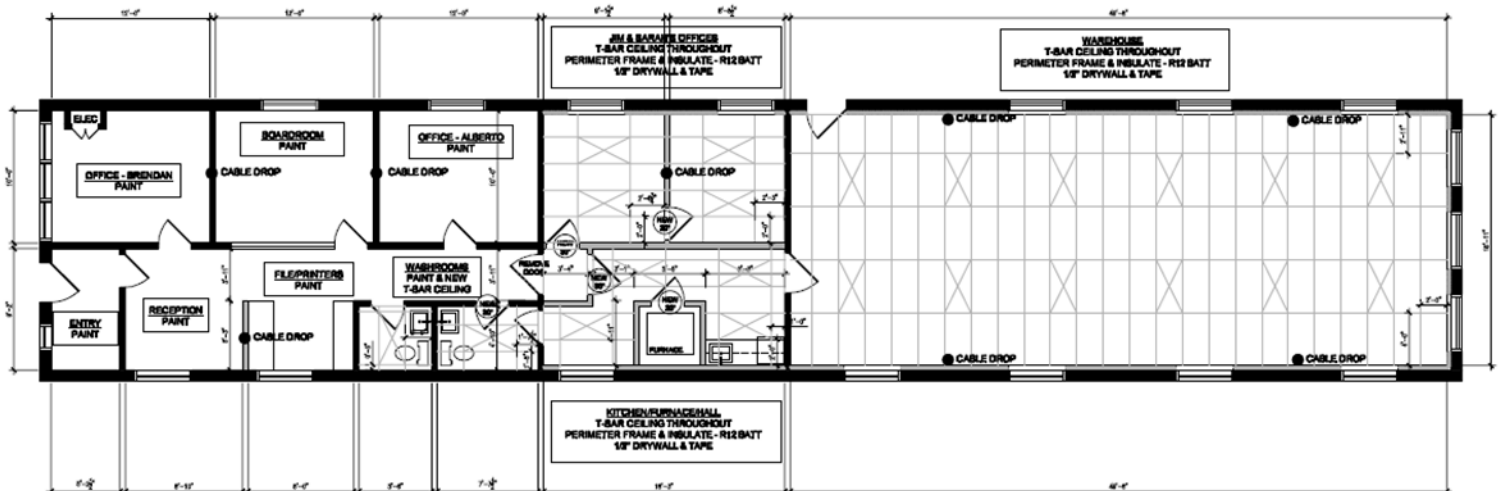
LOCATION PLAN N.T.S.



SITE PLAN ESC. 1/32" = 1'-0"

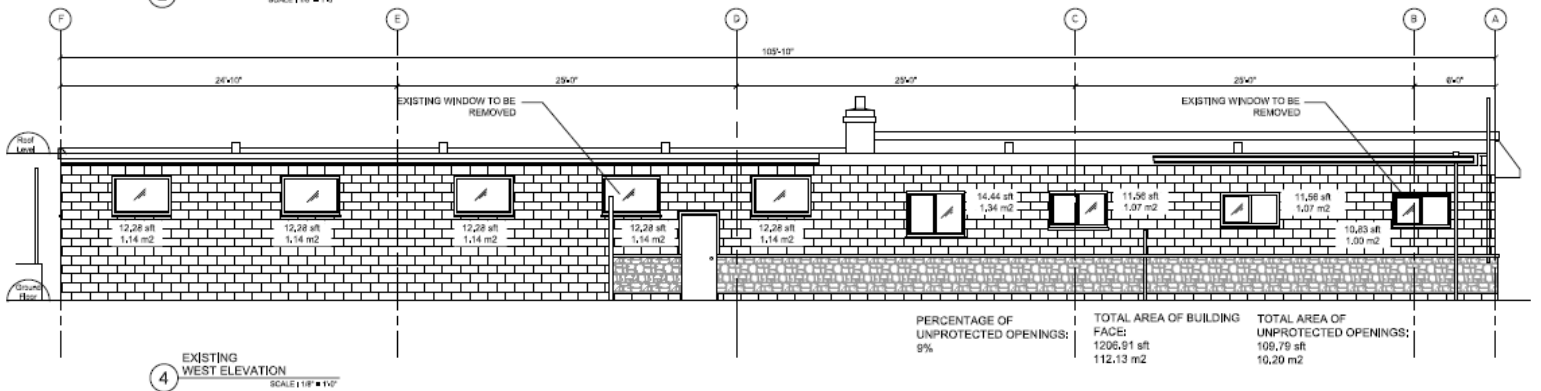
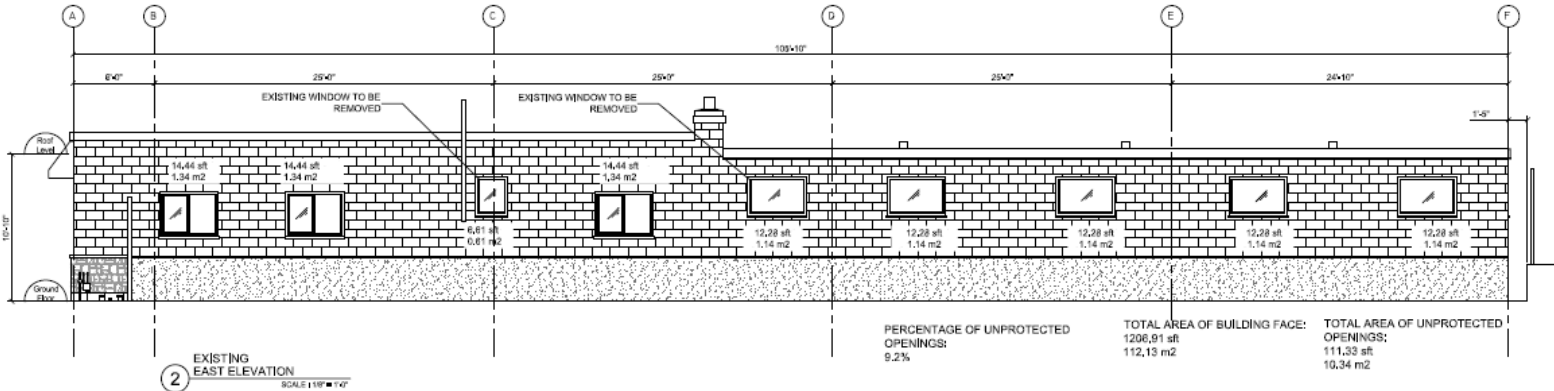
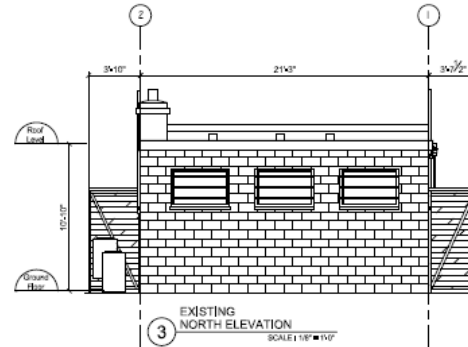
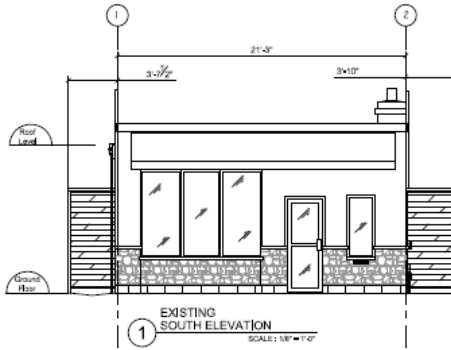
NOTE:

SCOPE OF WORK INCLUDES THE CONSTRUCTION OF A ONE STOREY ADDITION WITH LOFT ON TOP OF THE EXISTING ONE STOREY BUILDING.



ELEVATION

1122
CASTLEFIELD AVENUE
TORONTO, ON



Terry Di Felice*, MBA

Senior Vice President
+1 416 495 6209
terry.difelice@cbre.com

*Sales Representative

Markus Miller

Sales Representative
+1 416 495 6221
markus.miller@cbre.com

CBRE Limited

2005 Sheppard Avenue East
Suite 800
Toronto, ON | M2J 5B4

INTERIOR PHOTOS

1122
CASTLEFIELD AVENUE
TORONTO, ON

